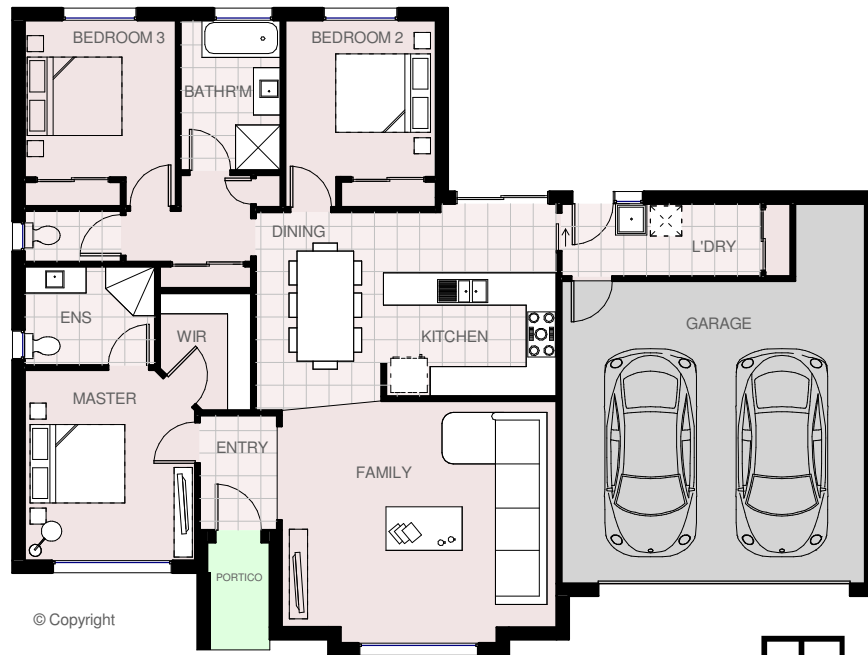




Residence area	130.74 m <sup>2</sup> s	14.08 sqrs
Garage area	41.86 m <sup>2</sup> s	4.50 sqrs
Portico area	2.62 m <sup>2</sup> s	0.28 sqrs
Total area	175.22 m <sup>2</sup> s	18.86 sqrs

Total length	17.15 m
Total width	12.85 m

# MEADOW PARK 19



© Copyright



**HARRINGTON**  
**H O M E S**  
VICTORIA

*Love your Lifestyle*

**Display Centre**  
121a Firebrace Street  
Horsham Vic 3400  
Phone: 5382 4400  
Mobile: 0418 504 341  
info@harringtonhomes.com.au  
www.harringtonhomes.com.au