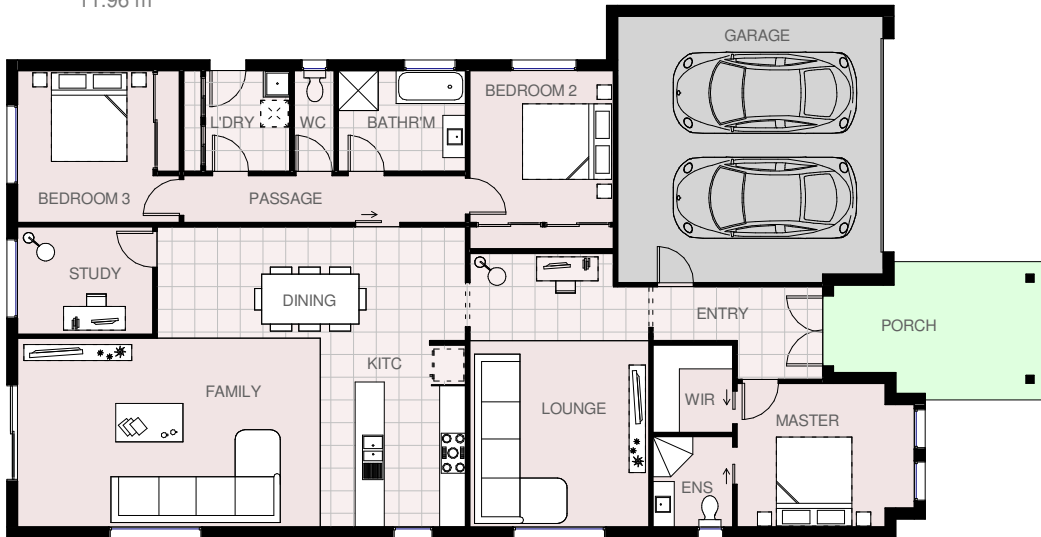




House area	181.75 m <sup>2</sup> s	19.56 squares
Garage area	40.40 m <sup>2</sup> s	4.35 squares
Portico area	7.97 m <sup>2</sup> s	0.86 squares
Total area	230.12 m <sup>2</sup> s	24.77 squares

Total length	23.13 m
Total width	11.96 m

# CARNEGIE 25



© Copyright



**HARRINGTON**  
**H O M E S**  
VICTORIA

*Love your Lifestyle*

**Display Centre**  
121a Firebrace Street  
Horsham Vic 3400  
Phone: 5382 4400  
Mobile: 0418 504 341  
info@harringtonhomes.com.au  
www.harringtonhomes.com.au