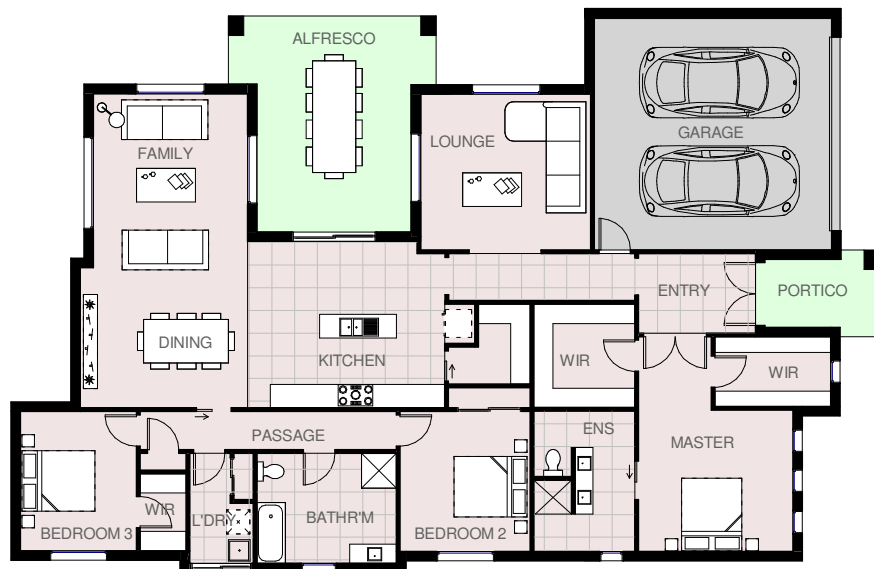




House area	200.14 m ² s	21.54 squares
Garage area	40.46 m ² s	4.35 squares
Alfresco area	22.23 m ² s	2.40 squares
Portico area	7.57 m ² s	0.81 squares
Total area	270.40 m ² s	29.10 squares

Total length	22.76 m
Total width	14.55 m

COVENTRY 30



© Copyright



HARRINGTON
H O M E S
VICTORIA

Love your Lifestyle

Display Centre
121a Firebrace Street
Horsham Vic 3400
Phone: 5382 4400
Mobile: 0418 504 341

info@harringtonhomes.com.au
www.harringtonhomes.com.au