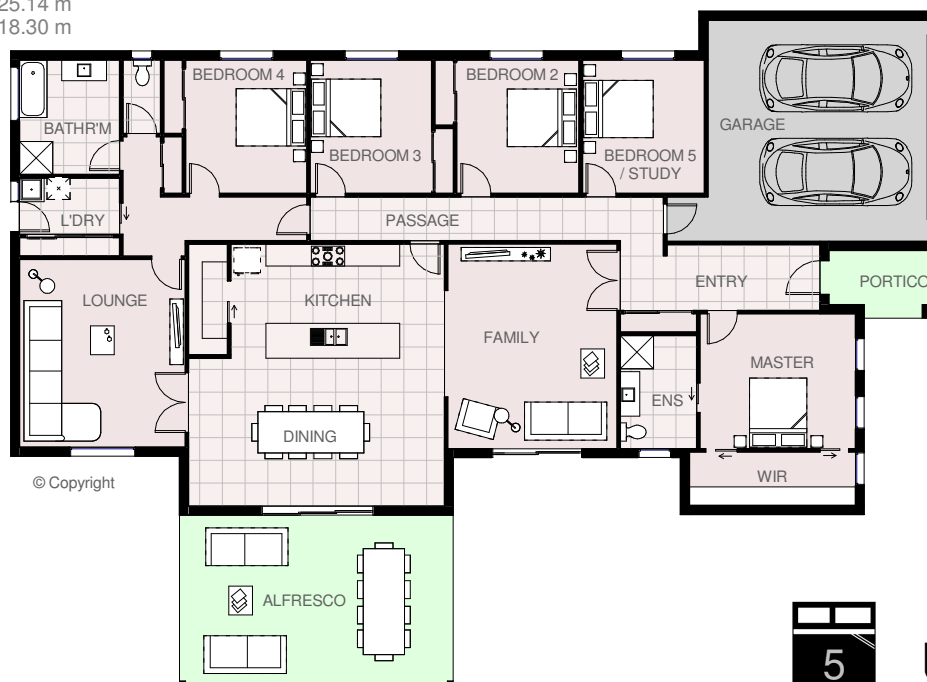




House area	248.42 m ² s	26.74 squares
Garage area	41.25 m ² s	4.44 squares
Portico area	5.21 m ² s	0.56 squares
Alfresco area	34.36 m ² s	3.70 squares
Total area	329.24 m ² s	35.44 squares

CRESTMORE 36

Total length	25.14 m
Total width	18.30 m



HARRINGTON
H O M E S

VICTORIA

Love your Lifestyle

Display Centre
121a Firebrace Street
Horsham Vic 3400
Phone: 5382 4400
Mobile: 0418 504 341
info@harringtonhomes.com.au
www.harringtonhomes.com.au