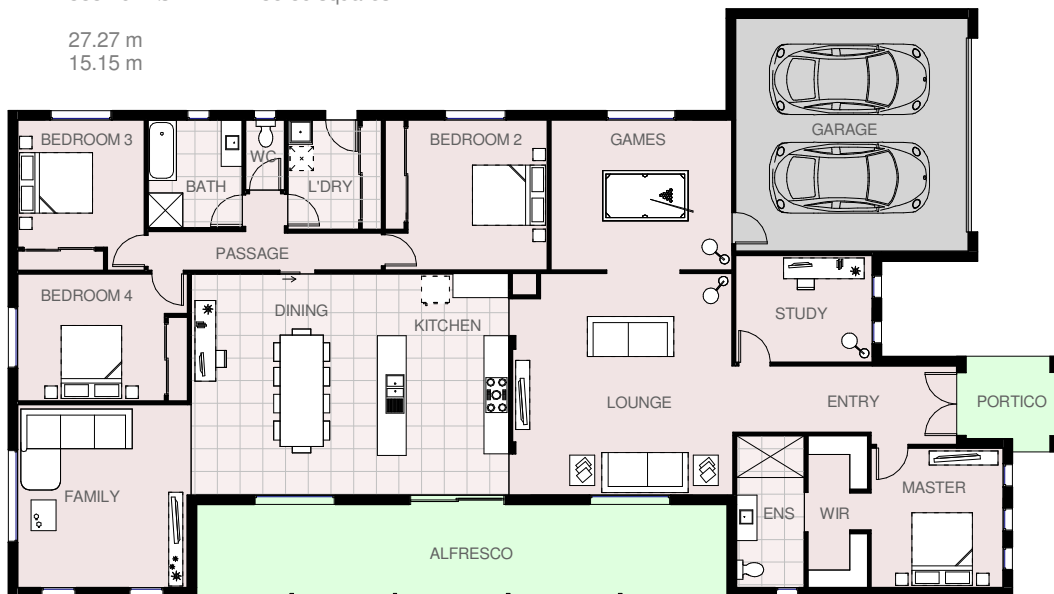




# IRIS 36

House area	254.20 m <sup>2</sup> s	27.36 squares
Garage area	40.40 m <sup>2</sup> s	4.35 squares
Alfresco area	32.82 m <sup>2</sup> s	3.53 squares
Portico area	5.74 m <sup>2</sup> s	0.62 squares
Total area	333.16 m <sup>2</sup> s	35.86 squares

Total length 27.27 m  
Total width 15.15 m



© Copyright



# HARRINGTON H O M E S

VICTORIA

*Love your Lifestyle*

**Display Centre**  
121a Firebrace Street  
Horsham Vic 3400  
Phone: 5382 4400  
Mobile: 0418 504 341

info@harringtonhomes.com.au  
www.harringtonhomes.com.au