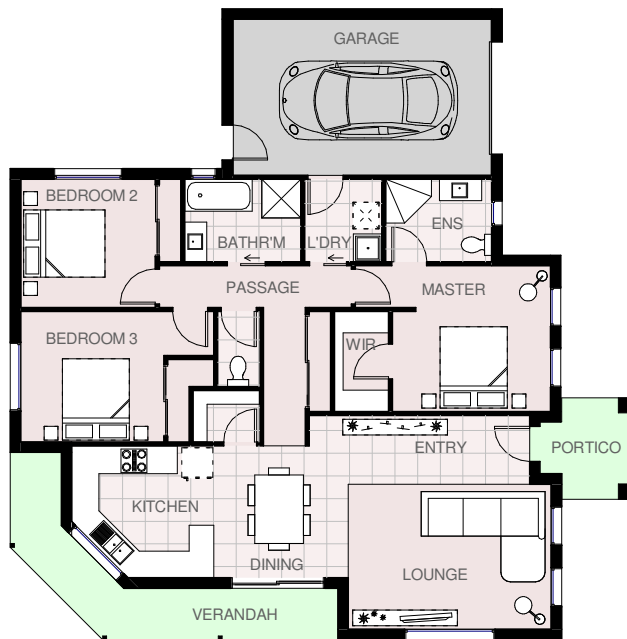




House area	120.99 m ² s	13.02 squares
Garage area	23.91 m ² s	2.57 squares
Verandah area	11.68 m ² s	1.26 squares
Portico area	4.54 m ² s	0.49 squares
Total area	161.12 m ² s	17.34 squares

KEMSLEY 18

Total length	14.41 m
Total width	14.60 m



© Copyright



HARRINGTON H O M E S

VICTORIA

Love your Lifestyle

Display Centre
121a Firebrace Street
Horsham Vic 3400
Phone: 5382 4400
Mobile: 0418 504 341

info@harringtonhomes.com.au
www.harringtonhomes.com.au