



HARRINGTON H O M E S

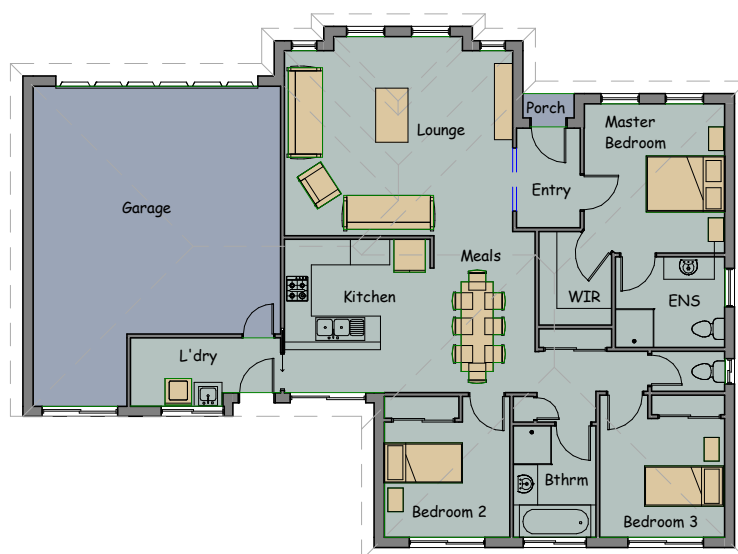
VICTORIA



Meadow Park 19

Area Schedule

House Area	126.40m ²	13.60sq's
Garage Area	43.85 m ²	4.72sq's
Portico Area	0.72 m ²	0.08sq's
<hr/>		
Total Area	170.97 m ²	18.40sq's
<hr/>		
House Length	12.55 m	
House Width	17.15 m	



HARRINGTON HOMES

121a Firebrace Street
Horsham Vic 3400

Phone: 03) 5382 4400

Fax: 03) 5382 4461

info@harringtonhomes.com.au
www.harringtonhomes.com.au