



HARRINGTON H O M E S

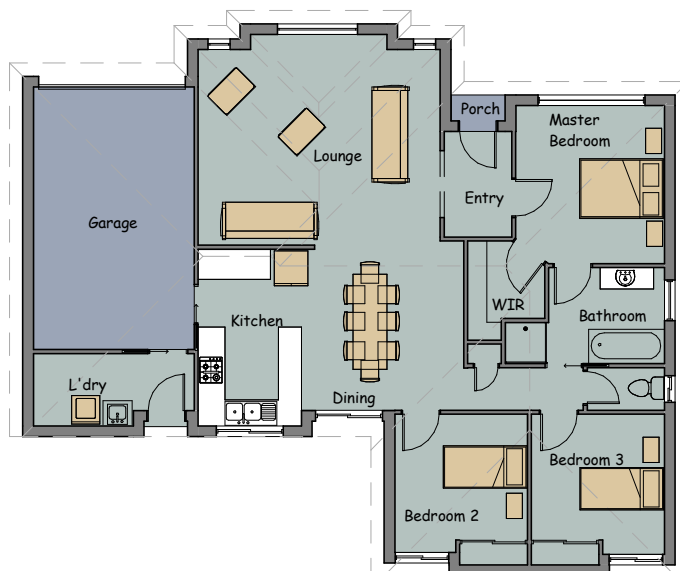
VICTORIA



Parkwood 16

Area Schedule

House Area	119.35 m ²	12.85sq's
Garage Area	23.93 m ²	2.57sq's
Portico Area	0.73 m ²	0.08sq's
<hr/>		
Total Area	144.00 m ²	15.50sq's
House Length	12.55 m	
House Width	14.75 m	



HARRINGTON HOMES

121a Firebrace Street
Horsham Vic 3400

Phone: 03) 5382 4400

Fax: 03) 5382 4461

info@harringtonhomes.com.au
www.harringtonhomes.com.au