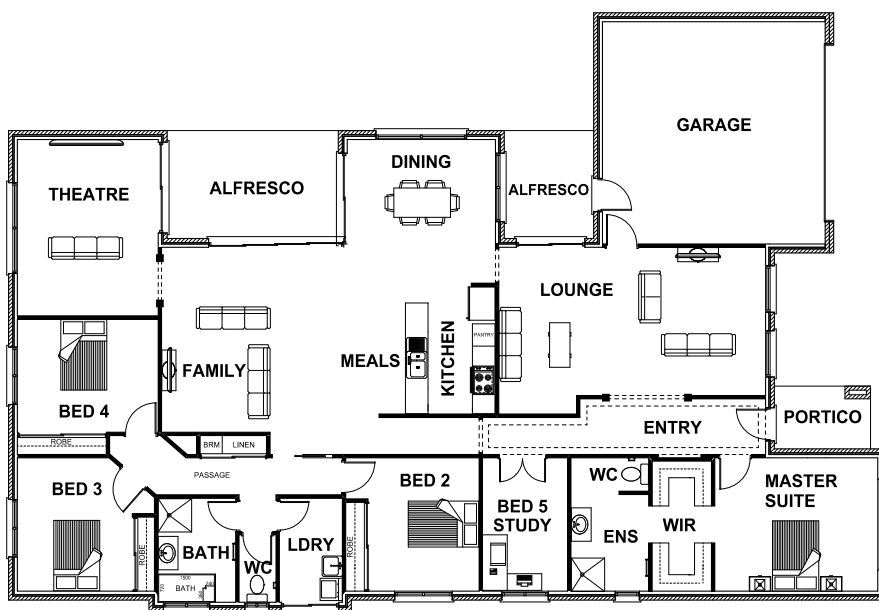




BRADSHAW 33

5 2 2 4



ROOM DIMENSIONS

Family	4.86m x 4.99m
Dining	4.00m x 2.91m
Lounge	7.20m x 4.50m
Kitchen	2.40m x 3.44m
Master Suite	4.40m x 3.60m
Bedroom 2	3.60m x 3.60m
Bedroom 3	3.70m x 3.60m
Bedroom 4	3.80m x 3.65m
Garage	6.01m x 6.00m

HOUSE DIMENSIONS

House Area	25.89 squares
Garage Area	4.35 squares
Alfresco Area	2.20 squares
Total Area	32.91 squares
Total Length	23.70m
Total Width	16.15m
Min Block Width	17.35m

*Subject to orientation and fall of land and developer and council guidelines. Classic floorplan shown.

Brochure is for marketing purposes only. - Plans and specifications are subject to change without notice. - Colours, furniture layouts, materials, finishes & landscape design are for impression purposes only. - Plans and impressions not to scale. - Plans subject to copyright

DISPLAY CENTRE

121a Firebrace Street
 Horsham Vic 3400
 Phone: 5382 4400
info@harringtonhomes.com.au