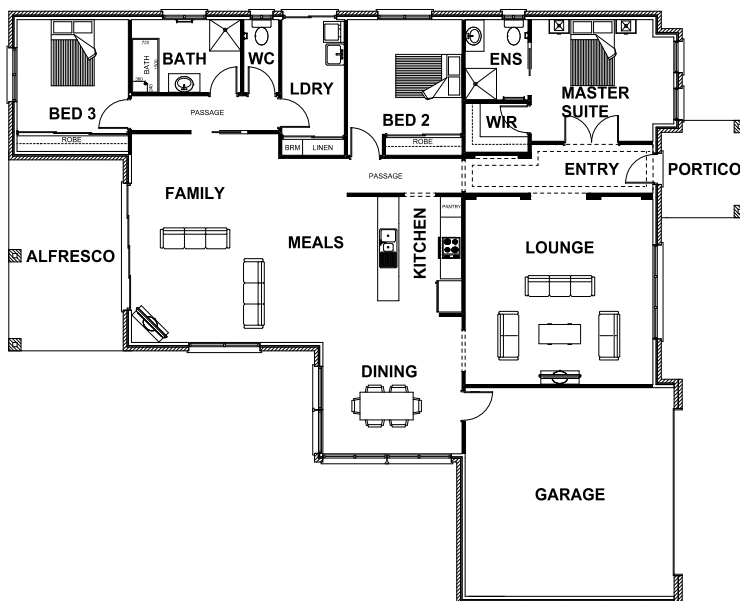




## LADLOW 27

3 2 2 3



### ROOM DIMENSIONS

Family	5.50m x 6.00m
Dining	4.00m x 3.20m
Lounge	5.40m x 5.50m
Kitchen	3.30m x 3.54m
Master Suite	4.10m x 3.50m
Bedroom 2	3.29m x 3.90m
Bedroom 3	3.20m x 3.79m
Garage	6.01m x 6.00m

### HOUSE DIMENSIONS

House Area	20.17 squares
Garage Area	4.35 squares
Alfresco Area	1.88 squares
Portico Area	0.59 squares
Total Area	26.99 squares
Total Length	21.21m
Total Width	17.06m
Min Block Width	18.26m

\*Subject to orientation and fall of land and developer and council guidelines. Classic floorplan shown.

Brochure is for marketing purposes only. - Plans and specifications are subject to change without notice. - Colours, furniture layouts, materials, finishes & landscape design are for impression purposes only. - Plans and impressions not to scale. - Plans subject to copyright

### DISPLAY CENTRE

121a Firebrace Street  
 Horsham Vic 3400  
 Phone: 5382 4400  
[info@harringtonhomes.com.au](mailto:info@harringtonhomes.com.au)