



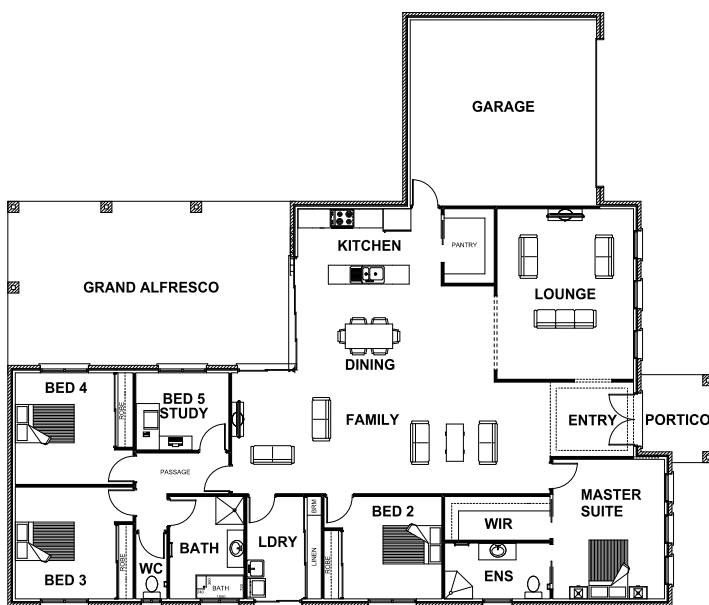
HARRINGTON H O M E S

*"love your
lifestyle"*



THORNLEY 34

5 2 2 2



ROOM DIMENSIONS

Family	10.27m x 3.60m
Dining	6.34m x 3.19m
Lounge	4.40m x 5.50m
Kitchen	6.34m x 2.40m
Master Suite	3.60m x 4.50m
Bedroom 2	3.80m x 3.30m
Bedroom 3	3.80m x 3.60m
Bedroom 3	3.80m x 3.60m
Garage	6.01m x 6.00m

HOUSE DIMENSIONS

House Area	23.96 squares
Garage Area	4.35 squares
Alfresco Area	4.89 squares
Portico Area	0.58 squares
Total Area	33.78 squares
Total Length	22.77m
Total Width	19.15m
Min Block Width	20.35m

*Subject to orientation and fall of land and developer and council guidelines. Classic floorplan shown.

Brochure is for marketing purposes only. - Plans and specifications are subject to change without notice. - Colours, furniture layouts, materials, finishes & landscape design are for impression purposes only. - Plans and impressions not to scale. - Plans subject to copyright

www.harringtonhomes.com.au

Harrington Homes Pty Ltd CBD-U 52666

DISPLAY CENTRE

121a Firebrace Street

Horsham Vic 3400

Phone: 5382 4400

info@harringtonhomes.com.au