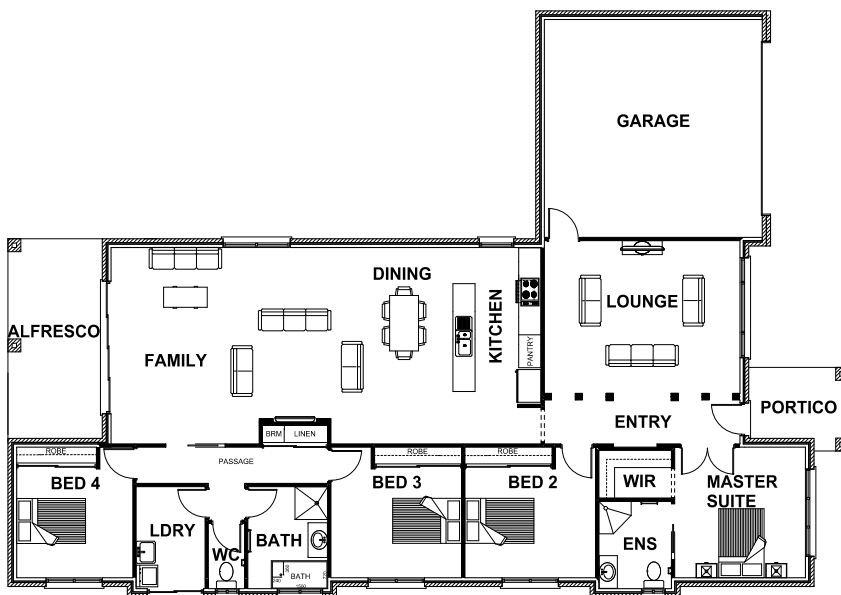




STRATTON 27

 4
  2
  2
  2



ROOM DIMENSIONS

Family	4.91m x 5.41m
Dining	4.54m x 5.41m
Lounge	5.39m x 4.21m
Kitchen	2.40m x 4.32m
Master Suite	3.60m x 3.60m
Bedroom 2	3.60m x 3.60m
Bedroom 3	3.60m x 3.60m
Garage	6.00m x 6.00m

HOUSE DIMENSIONS

House Area	20.37 squares
Garage Area	2.35 squares
Alfresco Area	1.56 squares
Portico Area	0.35 squares
Total Area	26.63 squares
Total Length	23.16m
Total Width	16.16m
Min Block Width	17.36m

*Subject to orientation and fall of land and developer and council guidelines. Classic floorplan shown.

Brochure is for marketing purposes only. - Plans and specifications are subject to change without notice. - Colours, furniture layouts, materials, finishes & landscape design are for impression purposes only. - Plans and impressions not to scale. - Plans subject to copyright

DISPLAY CENTRE

121a Firebrace Street
 Horsham Vic 3400
 Phone: 5382 4400
info@harringtonhomes.com.au