



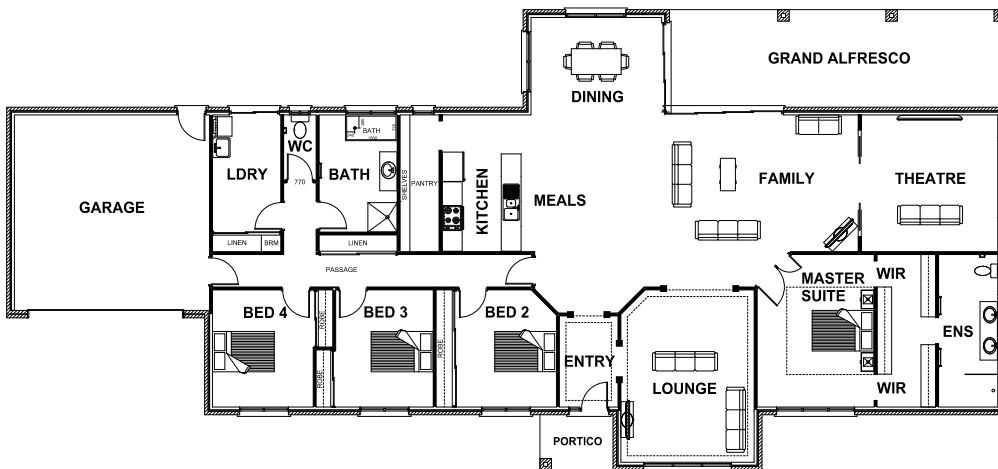
HARRINGTON
H O M E S

"love your lifestyle"



ASHBOURNE 35

4 2 2 4



ROOM DIMENSIONS

Family	4.20m x 5.81m
Dining	2.70m x 4.20m
Lounge	5.30m x 4.10m
Kitchen	4.20m x 3.96m
Master Suite	4.69m x 3.60m
Bedroom 2	3.60m x 3.70m
Bedroom 3	3.60m x 3.60m
Bedroom 4	3.60m x 3.70m
Garage	6.01m x 6.00m

HOUSE DIMENSIONS

House Area	27.24 squares
Garage Area	4.35 squares
Alfresco Area	3.33 squares
Portico Area	0.41 squares
Total Area	35.33 squares
Total Length	14.16m
Total Width	30.72m
Min Block Width	31.92m

*Subject to orientation and fall of land and developer and council guidelines. Classic floorplan shown.

Brochure is for marketing purposes only. - Plans and specifications are subject to change without notice. - Colours, furniture layouts, materials, finishes & landscape design are for impression purposes only. - Plans and impressions not to scale. - Plans subject to copyright

www.harringtonhomes.com.au

Harrington Homes Pty Ltd CBD-U 52666

DISPLAY CENTRE

121a Firebrace Street
Horsham Vic 3400
Phone: 5382 4400
info@harringtonhomes.com.au