



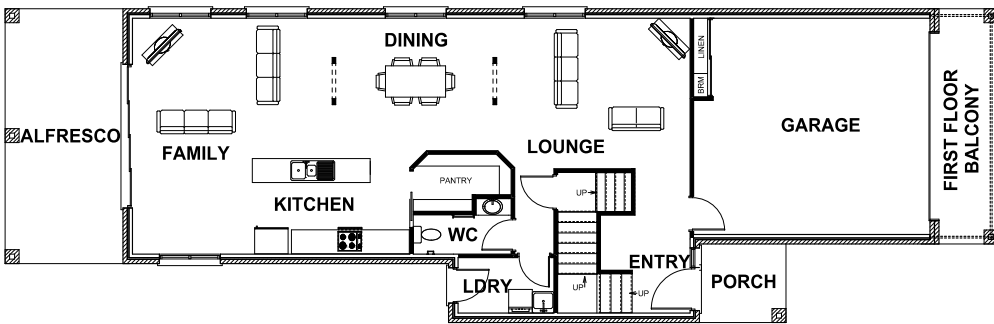
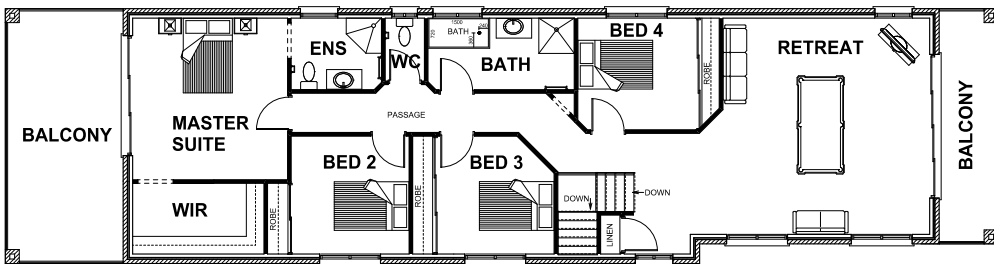
# HARRINGTON H O M E S

*"love your lifestyle"*



## AMBASSADOR 35

4    
 2.5    
 2    
 4



### ROOM DIMENSIONS

Family	5.08m x 6.00m
Lounge	4.92m x 3.83m
Dining	4.00m x 2.20m
Kitchen	3.80m x 2.40m
Master Suite	3.94m x 4.11m
Bedroom 2	3.60m x 3.00m
Bedroom 3	3.60m x 3.00m
Bedroom 4	3.60m x 2.84m
Garage	6.01m x 5.50m

### HOUSE DIMENSIONS

Ground floor	11.16 squares
First floor	13.98 squares
Garage Area	4.01 squares
Alfresco Area	2.09 squares
Total Area	34.77 squares
Total Length	25.25m
Total Width	7.98m
Min Block Width	9.18m

\*Subject to orientation and fall of land and developer and council guidelines. Classic floorplan shown.

Brochure is for marketing purposes only. - Plans and specifications are subject to change without notice. - Colours, furniture layouts, materials, finishes & landscape design are for impression purposes only. - Plans and impressions not to scale. - Plans subject to copyright

[www.harringtonhomes.com.au](http://www.harringtonhomes.com.au)

Harrington Homes Pty Ltd CBD-U 52666

### DISPLAY CENTRE

121a Firebrace Street  
 Horsham Vic 3400  
 Phone: 5382 4400  
[info@harringtonhomes.com.au](mailto:info@harringtonhomes.com.au)