



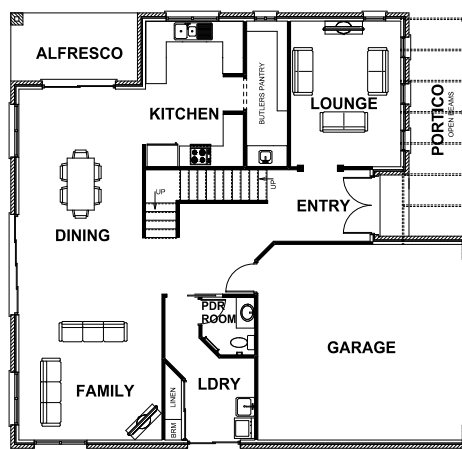
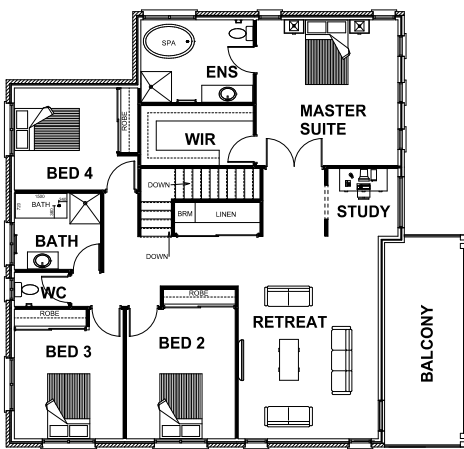
HARRINGTON HOMES

"love your lifestyle"



KENSINGTON 35

4
 2.5
 2
 4



ROOM DIMENSIONS

Family	4.20m x 4.20m
Lounge	3.63m x 4.37m
Dining	3.24m x 4.28m
Kitchen	4.17m x 4.28m
Master Suite	4.17m x 4.28m
Bedroom 2	3.20m x 4.40m
Bedroom 3	3.20m x 3.80m
Bedroom 4	3.63m x 3.00m
Garage	6.01m x 5.75m

HOUSE DIMENSIONS

Ground floor	12.21 squares
First floor	14.93 squares
Garage Area	3.97 squares
Alfresco Area	0.80 squares
Balcony Area	1.59 squares
Total Area	34.77 squares
Total Length	13.50m
Total Width	12.79m
Min Block Width	13.99m

*Subject to orientation and fall of land and developer and council guidelines. Classic floorplan shown.

Brochure is for marketing purposes only. - Plans and specifications are subject to change without notice. - Colours, furniture layouts, materials, finishes & landscape design are for impression purposes only. - Plans and impressions not to scale. - Plans subject to copyright

www.harringtonhomes.com.au

Harrington Homes Pty Ltd CBD-U 52666

DISPLAY CENTRE

121a Firebrace Street
 Horsham Vic 3400
 Phone: 5382 4400
info@harringtonhomes.com.au