



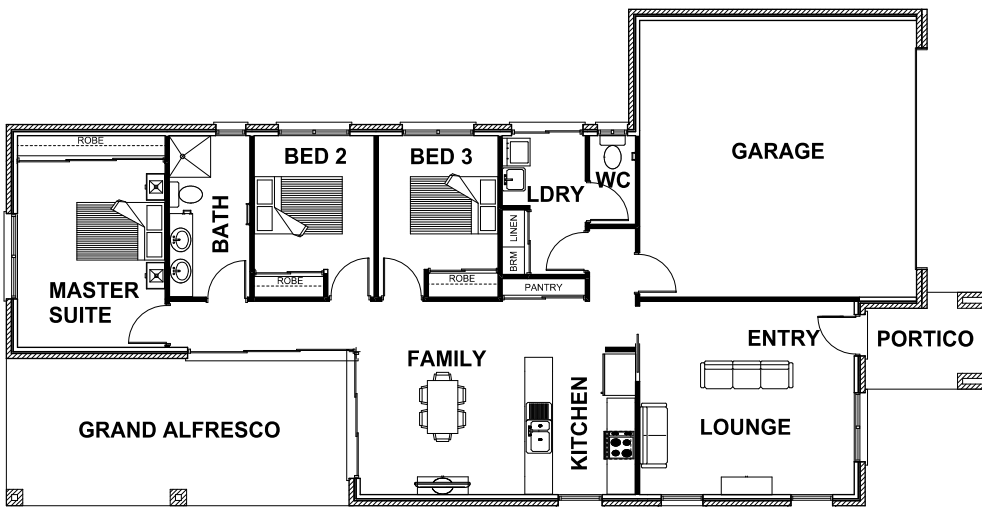
HARRINGTON  
H O M E S

*"love your lifestyle"*



**CARLISLE 19**

3 1 2 2



**ROOM DIMENSIONS**

Family	3.57m x 2.70m
Lounge	4.65m x 4.19m
Kitchen	2.40m x 3.10m
Master Suite	3.20m x 4.59m
Bedroom 2	2.60m x 3.50m
Bedroom 3	2.60m x 3.50m

**HOUSE DIMENSIONS**

House Area	12.04 squares
Garage Area	4.28 squares
Alfresco Area	2.55 squares
Portico Area	0.56 squares
Total Area	19.43 squares
Total Length	21.31m
Total Width	10.76m
Min Block Width	11.96m

\*Subject to orientation and fall of land and developer and council guidelines. Classic floorplan shown.

Brochure is for marketing purposes only. - Plans and specifications are subject to change without notice. - Colours, furniture layouts, materials, finishes & landscape design are for impression purposes only. - Plans and impressions not to scale. - Plans subject to copyright

[www.harringtonhomes.com.au](http://www.harringtonhomes.com.au)

Harrington Homes Pty Ltd CBD-U 52666

**DISPLAY CENTRE**

121a Firebrace Street  
Horsham Vic 3400  
Phone: 5382 4400  
[info@harringtonhomes.com.au](mailto:info@harringtonhomes.com.au)