



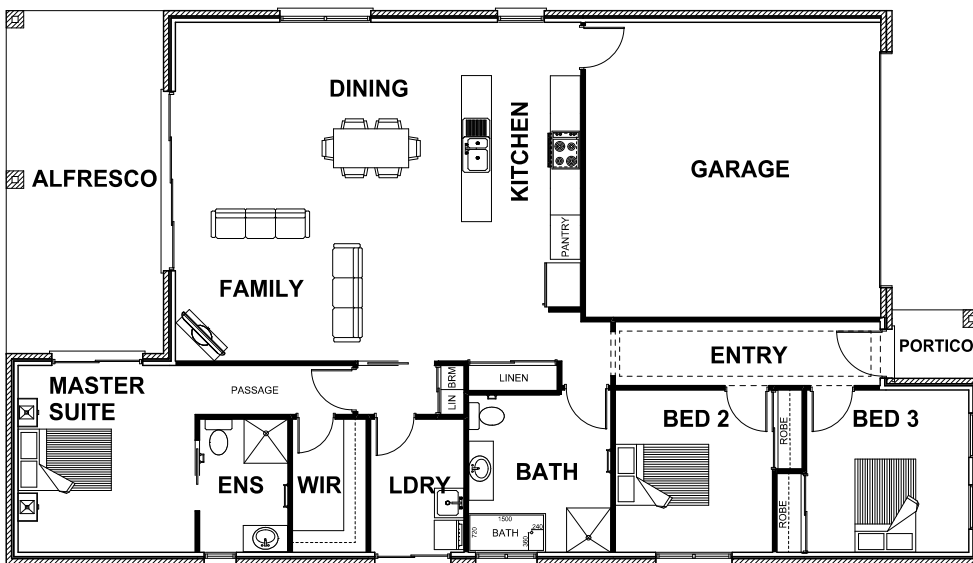
**HARRINGTON
H O M E S**

*"love your
lifestyle"*



ARIA 23

3 2 2 1



ROOM DIMENSIONS

Family	3.95m x 6.89m
Dining	2.30m x 6.89m
Kitchen	2.40m x 4.98m
Master Suite	3.60m x 3.80m
Bedroom 2	3.80m x 3.30m
Bedroom 3	3.90m x 3.30m
Garage	6.01m x 6.00m

HOUSE DIMENSIONS

House Area	15.98 squares
Garage Area	4.35 squares
Alfresco Area	2.40 squares
Portico Area	0.21 squares
Total Area	22.94 squares
Total Length	19.82m
Total Width	11.26m
Min Block Width	12.46m

*Subject to orientation and fall of land and developer and council guidelines. Classic floorplan shown.

Brochure is for marketing purposes only. - Plans and specifications are subject to change without notice. - Colours, furniture layouts, materials, finishes & landscape design are for impression purposes only. - Plans and impressions not to scale. - Plans subject to copyright

www.harringtonhomes.com.au

Harrington Homes Pty Ltd CBD-U 52666

DISPLAY CENTRE

121a Firebrace Street
Horsham Vic 3400
Phone: 5382 4400
info@harringtonhomes.com.au