



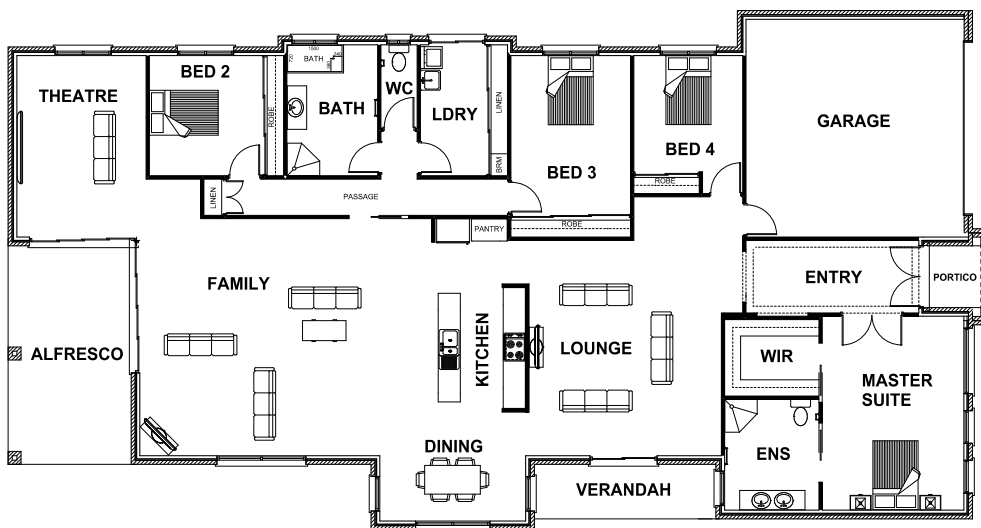
# HARRINGTON HOMES

*"love your lifestyle"*



## VERMONT 37

4 2 2 3



### ROOM DIMENSIONS

Family	6.37m x 5.93m
Dining	4.02m x 3.00m
Lounge	5.30m x 5.93m
Kitchen	2.40m x 4.73m
Master Suite	3.90m x 5.34m
Bedroom 2	3.70m x 3.31m
Bedroom 3	3.30m x 5.00m
Bedroom 3	3.00m x 3.80m
Garage	6.01m x 6.00m

### HOUSE DIMENSIONS

House Area	29.00 squares
Garage Area	4.35 squares
Alfresco Area	2.00 squares
Portico Area	0.33 squares
Total Area	36.38 squares
Total Length	27.17m
Total Width	14.00m
Min Block Width	15.20m

\*Subject to orientation and fall of land and developer and council guidelines. Classic floorplan shown.

Brochure is for marketing purposes only. - Plans and specifications are subject to change without notice. - Colours, furniture layouts, materials, finishes & landscape design are for impression purposes only. - Plans and impressions not to scale. - Plans subject to copyright

[www.harringtonhomes.com.au](http://www.harringtonhomes.com.au)

Harrington Homes Pty Ltd CBD-U 52666

### DISPLAY CENTRE

121a Firebrace Street  
Horsham Vic 3400  
Phone: 5382 4400  
[info@harringtonhomes.com.au](mailto:info@harringtonhomes.com.au)