



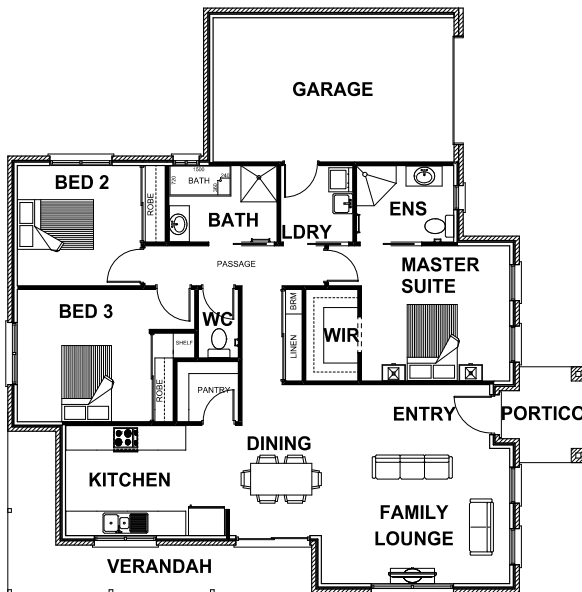
HARRINGTON  
H O M E S

*"love your lifestyle"*



## KEMSLEY 18

3 2 1 1



### ROOM DIMENSIONS

Family	4.70m x 4.97m
Dining	2.45m x 3.05m
Kitchen	4.56m x 3.05m
Master Suite	3.70m x 3.38m
Bedroom 2	3.69m x 3.00m
Bedroom 3	4.43m x 3.00m
Garage	6.01m x 3.60m

### HOUSE DIMENSIONS

House Area	13.18 squares
Garage Area	2.57 squares
Veranda Area	1.35 squares
Portico Area	0.49 squares
Total Area	1759 squares
Total Length	14.42m
Total Width	14.60m
Min Block Width	15.80m

\*Subject to orientation and fall of land and developer and council guidelines. Classic floorplan shown.

Brochure is for marketing purposes only. - Plans and specifications are subject to change without notice. - Colours, furniture layouts, materials, finishes & landscape design are for impression purposes only. - Plans and impressions not to scale. - Plans subject to copyright

[www.harringtonhomes.com.au](http://www.harringtonhomes.com.au)

Harrington Homes Pty Ltd CBD-U 52666

### DISPLAY CENTRE

121a Firebrace Street  
Horsham Vic 3400  
Phone: 5382 4400  
[info@harringtonhomes.com.au](mailto:info@harringtonhomes.com.au)