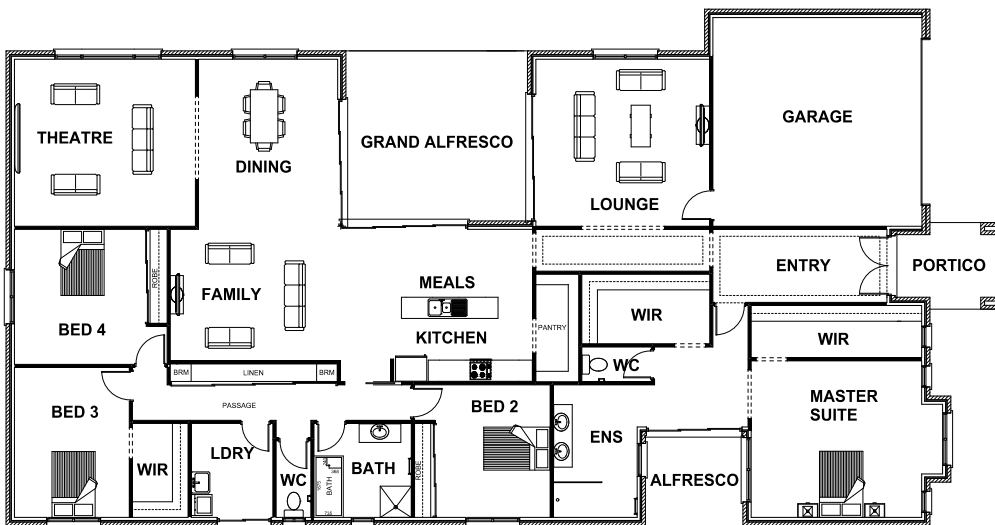




## MONACO 41

4 2 2 4



### ROOM DIMENSIONS

Family	4.80m x 3.88m
Dining	4.00m x 4.80m
Lounge	5.00m x 4.80m
Kitchen	3.80m x 2.40m
Master Suite	5.50m x 4.50m
Bedroom 2	3.90m x 3.81m
Bedroom 3	3.30m x 4.31m
Bedroom 4	3.88m x 4.39m
Garage	6.01m x 6.00m

### HOUSE DIMENSIONS

House Area	32.05 squares
Garage Area	4.25 squares
Alfresco Area	3.53 squares
Portico Area	0.81 squares
Total Area	40.64 squares
Total Length	28.71m
Total Width	14.85m
Min Block Width	16.05m

\*Subject to orientation and fall of land and developer and council guidelines. Classic floorplan shown.

Brochure is for marketing purposes only. - Plans and specifications are subject to change without notice. - Colours, furniture layouts, materials, finishes & landscape design are for impression purposes only. - Plans and impressions not to scale. - Plans subject to copyright

### DISPLAY CENTRE

121a Firebrace Street  
 Horsham Vic 3400  
 Phone: 5382 4400  
[info@harringtonhomes.com.au](mailto:info@harringtonhomes.com.au)