



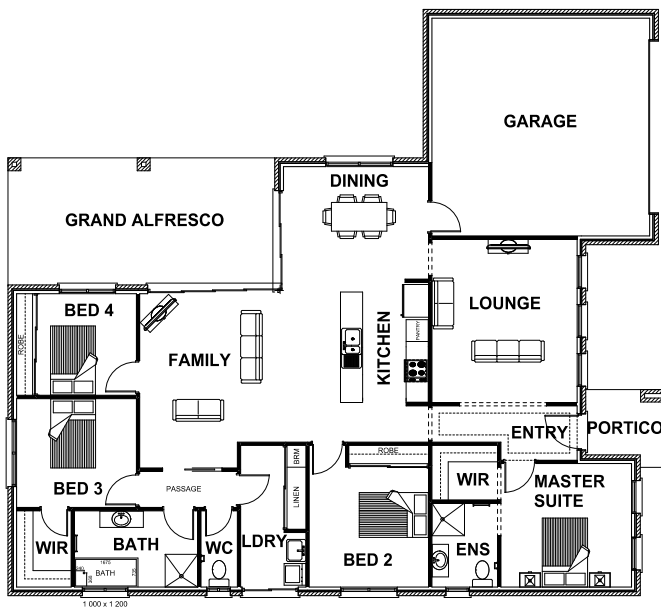
HARRINGTON
H O M E S

"love your lifestyle"



INGLEWOOD 25

4 2 2 3



ROOM DIMENSIONS

Family	3.60m x 4.80m
Dining	4.00m x 3.20m
Lounge	4.00m x 4.50m
Kitchen	2.40m x 3.21m
Master Suite	3.60m x 3.40m
Bedroom 2	3.29m x 3.90m
Bedroom 3	3.30m x 3.00m
Bedroom 4	3.30m x 2.80m

HOUSE DIMENSIONS

House Area	17.54 squares
Garage Area	4.35 squares
Alfresco Area	2.77 squares
Total Area	25.11 squares
Total Length	18.12m
Total Width	16.15m
Min Block Width	17.35m

*Subject to orientation and fall of land and developer and council guidelines. Classic floorplan shown.

Brochure is for marketing purposes only. - Plans and specifications are subject to change without notice. - Colours, furniture layouts, materials, finishes & landscape design are for impression purposes only. - Plans and impressions not to scale. - Plans subject to copyright

www.harringtonhomes.com.au

Harrington Homes Pty Ltd CBD-U 52666

DISPLAY CENTRE

121a Firebrace Street
Horsham Vic 3400
Phone: 5382 4400
info@harringtonhomes.com.au