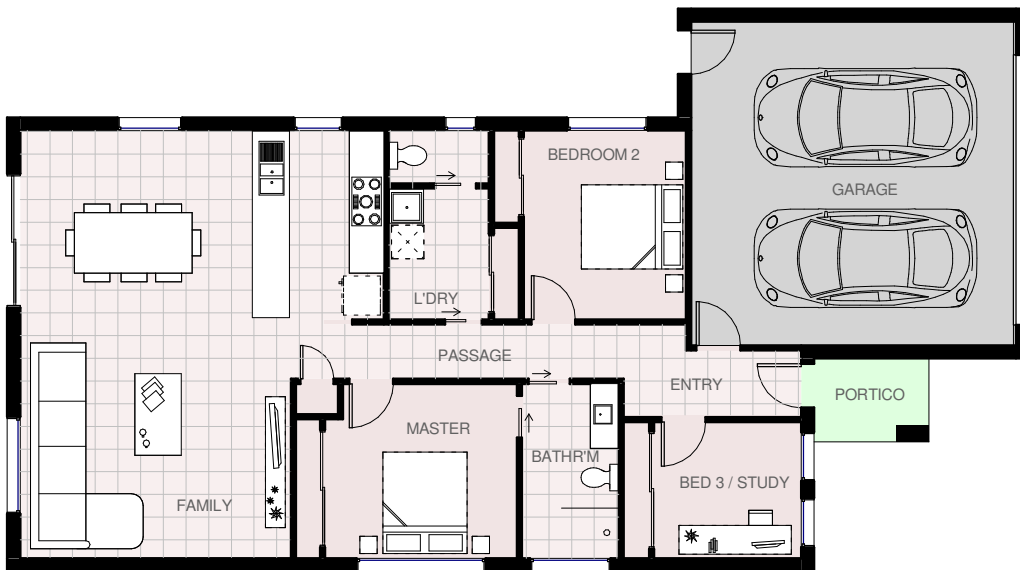




House area	115.55 m ² s	12.44 squares
Garage area	40.40 m ² s	4.35 squares
Portico area	3.33 m ² s	0.36 squares
Total area	159.28 m ² s	17.15 squares

PARKROYAL 18

Total length	18.89 m
Total width	10.39 m



© Copyright



HARRINGTON
H O M E S

VICTORIA

Love your Lifestyle

Display Centre
121a Firebrace Street
Horsham Vic 3400
Phone: 5382 4400
Mobile: 0418 504 341

info@harringtonhomes.com.au
www.harringtonhomes.com.au