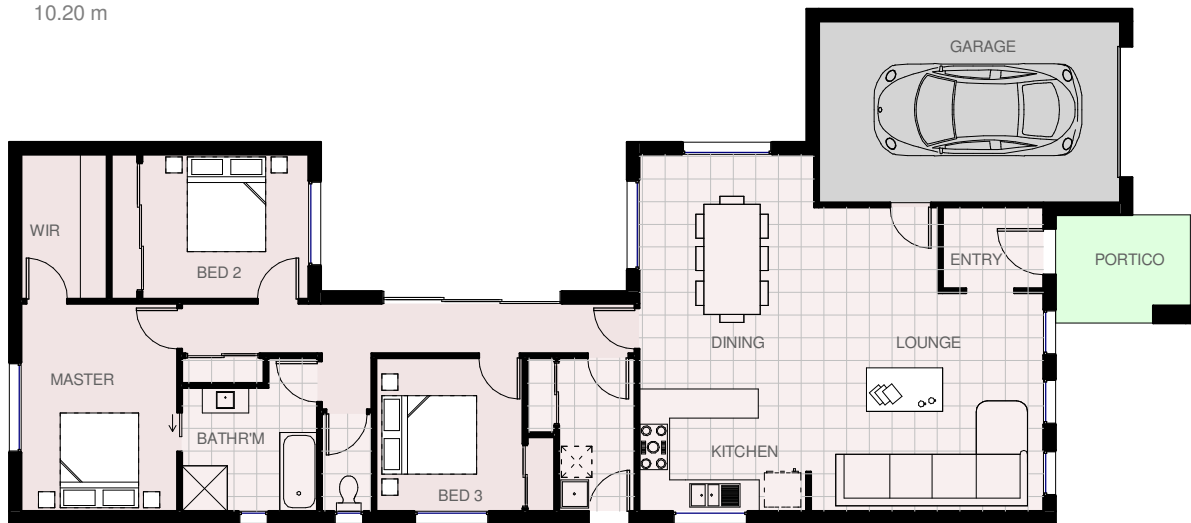




House area	133.06 m <sup>2</sup> s	14.32 squares
Garage area	24.96 m <sup>2</sup> s	2.69 squares
Portico area	6.38 m <sup>2</sup> s	0.69 squares
Total area	164.40 m <sup>2</sup> s	17.70 squares

# STRADBROKE 18

Total length	23.40 m
Total width	10.20 m



© Copyright



**HARRINGTON**  
**H O M E S**  
VICTORIA

*Love your Lifestyle*

**Display Centre**  
121a Firebrace Street  
Horsham Vic 3400  
Phone: 5382 4400  
Mobile: 0418 504 341  
info@harringtonhomes.com.au  
www.harringtonhomes.com.au