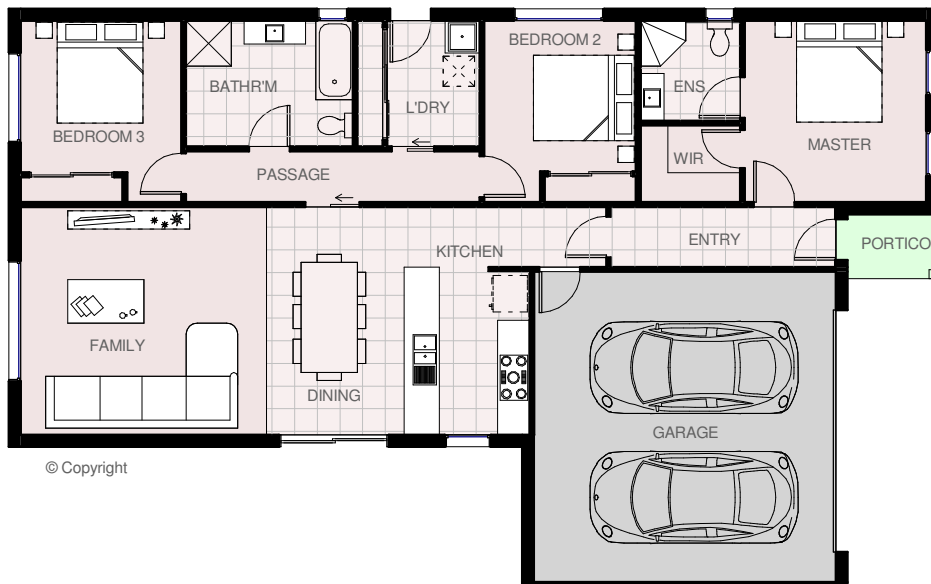




ALLURE 19

House area	129.91 m ² s	13.98 squares
Garage area	40.40 m ² s	4.35 squares
Portico area	2.42 m ² s	0.26 squares
Total area	172.73 m ² s	18.59 squares

Total length	18.42 m
Total width	11.46 m



© Copyright



HARRINGTON H O M E S

VICTORIA

Love your Lifestyle

Display Centre
 121a Firebrace Street
 Horsham Vic 3400
 Phone: 5382 4400
 Mobile: 0418 504 341

info@harringtonhomes.com.au
 www.harringtonhomes.com.au