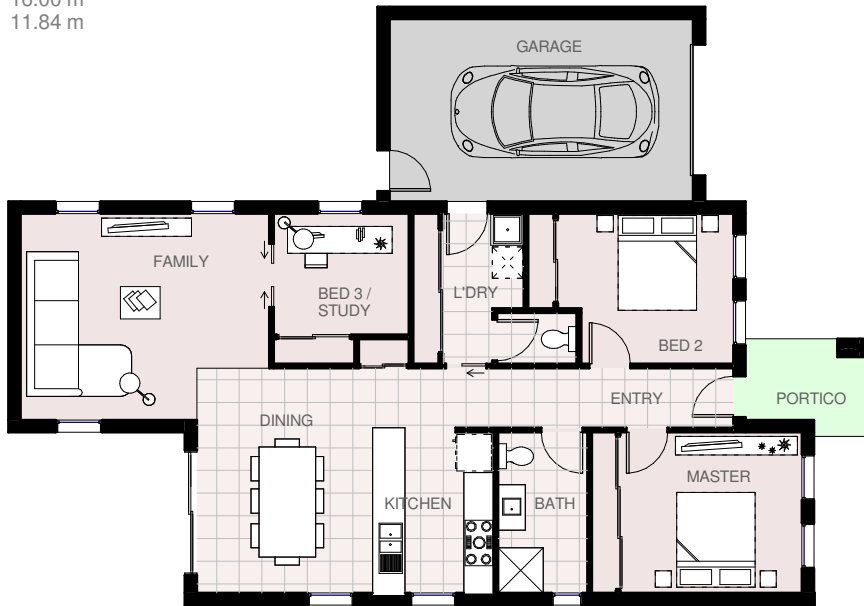




House area	105.45 m ² s	11.35 squares
Garage area	24.84 m ² s	2.67 squares
Portico area	4.62 m ² s	0.50 squares
Total area	134.91 m ² s	14.52 squares
Total length	16.00 m	
Total width	11.84 m	

PARKFIELD 15



© Copyright



HARRINGTON
H O M E S
 VICTORIA

Love your Lifestyle

Display Centre
 121a Firebrace Street
 Horsham Vic 3400
 Phone: 5382 4400
 Mobile: 0418 504 341
info@harringtonhomes.com.au
www.harringtonhomes.com.au