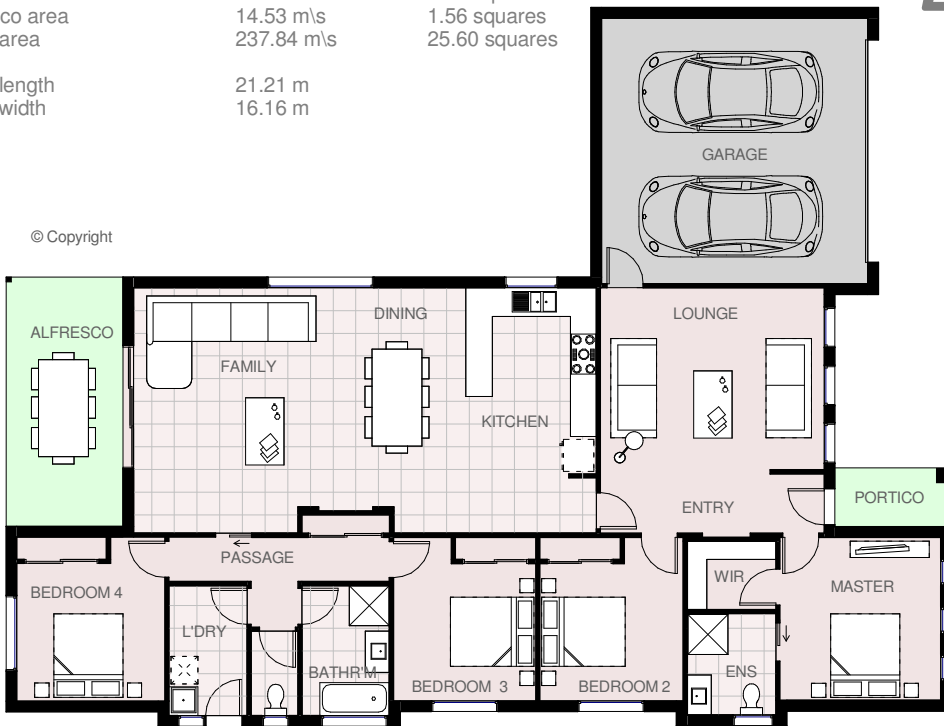




House area	179.68 m ² s	19.34 squares
Garage area	40.40 m ² s	4.35 squares
Portico area	3.23 m ² s	0.35 squares
Alfresco area	14.53 m ² s	1.56 squares
Total area	237.84 m ² s	25.60 squares
Total length	21.21 m	
Total width	16.16 m	

LANDY 26



HARRINGTON
H O M E S
VICTORIA

Love your Lifestyle

Display Centre
121a Firebrace Street
Horsham Vic 3400
Phone: 5382 4400
Mobile: 0418 504 341
info@harringtonhomes.com.au
www.harringtonhomes.com.au