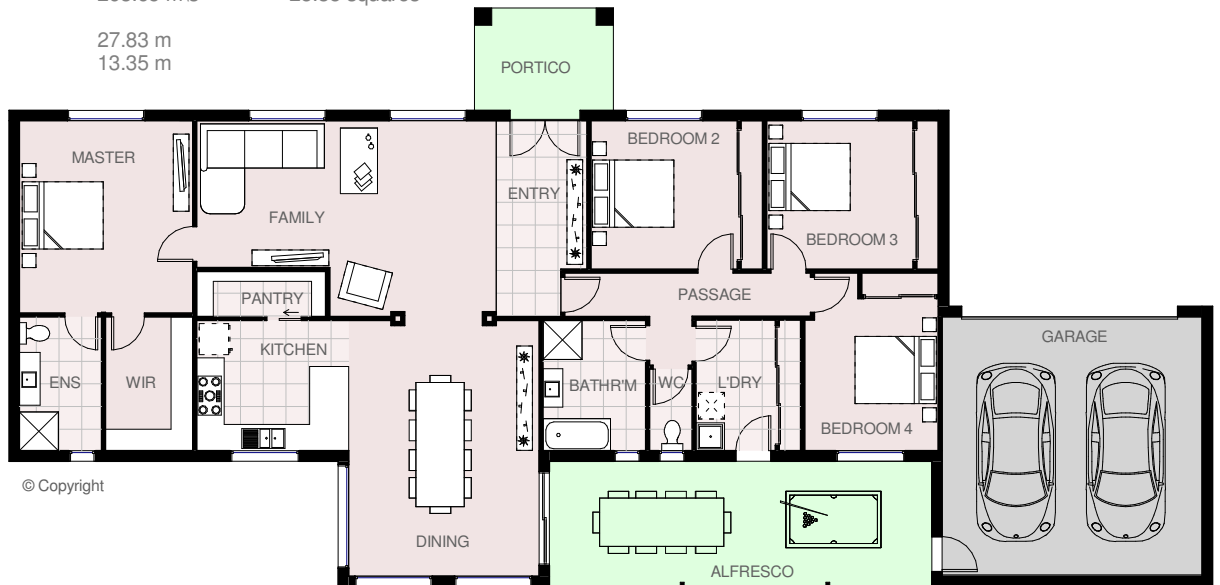




# KIRA 29

House area	190.25 m <sup>2</sup> s	20.48 squares
Garage area	40.40 m <sup>2</sup> s	4.35 squares
Alfresco area	25.72 m <sup>2</sup> s	2.77 squares
Portico area	7.28 m <sup>2</sup> s	0.78 squares
Total area	263.65 m <sup>2</sup> s	28.38 squares

Total length	27.83 m
Total width	13.35 m



**HARRINGTON**  
**H O M E S**  
VICTORIA

*Love your Lifestyle*

**Display Centre**  
121a Firebrace Street  
Horsham Vic 3400  
Phone: 5382 4400  
Mobile: 0418 504 341  
info@harringtonhomes.com.au  
www.harringtonhomes.com.au