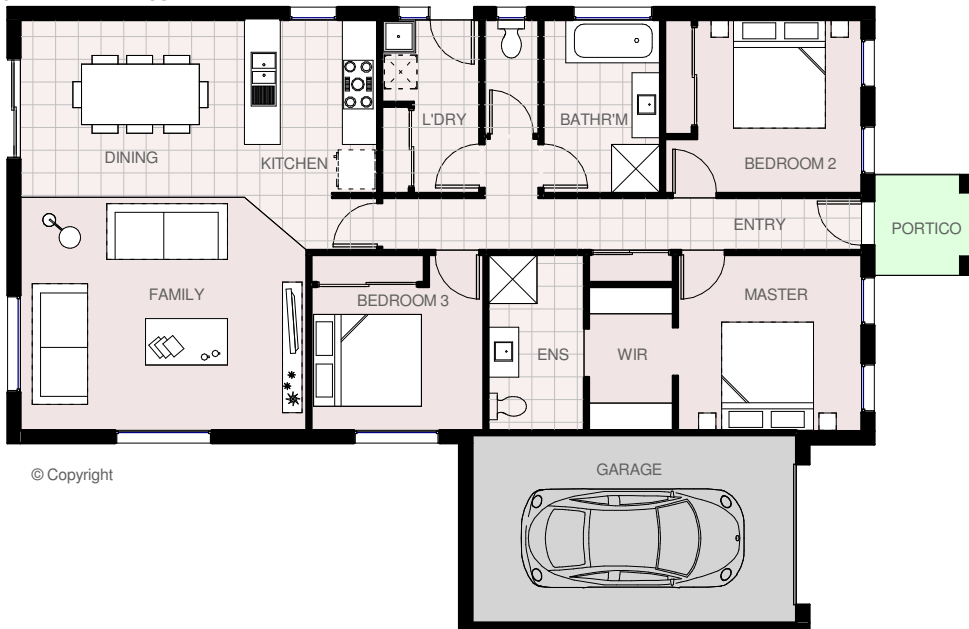




House area	129.28 m <sup>2</sup> s	13.92 squares
Garage area	24.23 m <sup>2</sup> s	2.61 squares
Portico area	3.65 m <sup>2</sup> s	0.39 squares
Total area	157.16 m <sup>2</sup> s	16.92 squares

# BRISTOL 17

Total length	17.99 m
Total width	11.65 m



© Copyright



# HARRINGTON H O M E S

VICTORIA

*Love your Lifestyle*

**Display Centre**  
121a Firebrace Street  
Horsham Vic 3400  
Phone: 5382 4400  
Mobile: 0418 504 341

info@harringtonhomes.com.au  
www.harringtonhomes.com.au