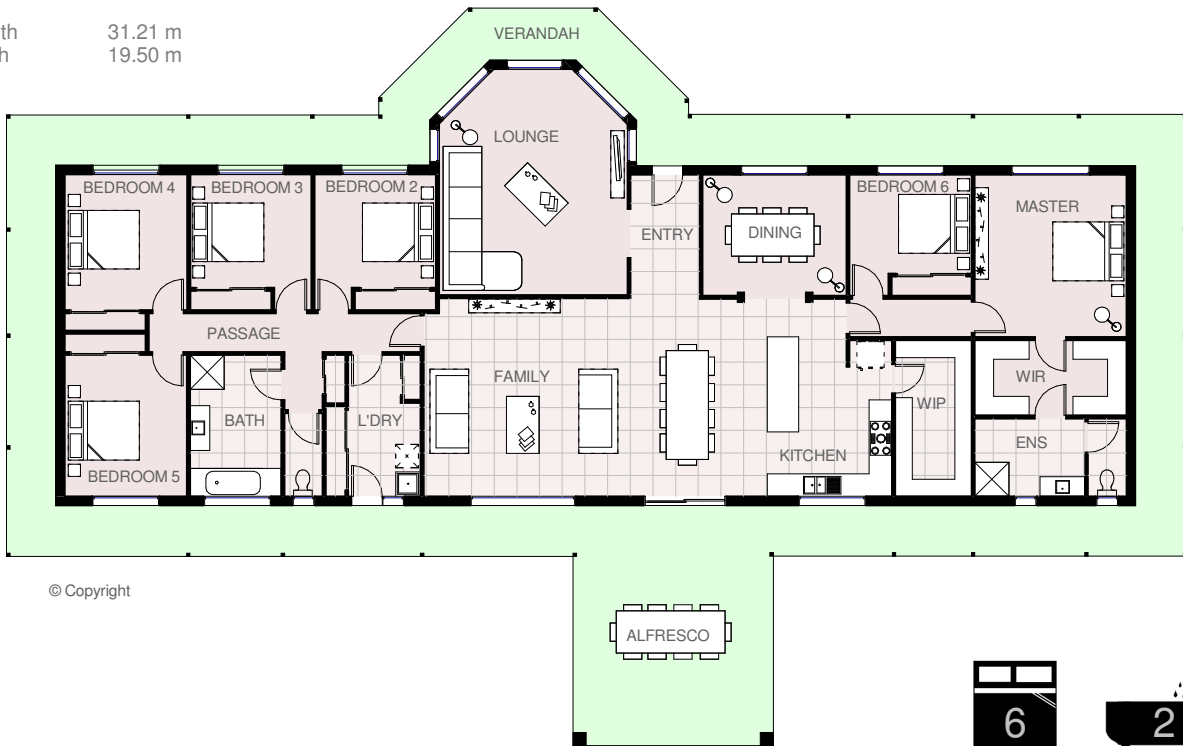




House area	269.40 m ² s	29.00 squares
Alfresco area	33.82 m ² s	3.64 squares
Verandah area	103.97 m ² s	11.19 squares
Total area	407.19 m ² s	43.83 squares

EARLWOOD 44

Total length	31.21 m
Total width	19.50 m



HARRINGTON
H O M E S
 VICTORIA

Love your Lifestyle

Display Centre
 121a Firebrace Street
 Horsham Vic 3400
 Phone: 5382 4400
 Mobile: 0418 504 341
info@harringtonhomes.com.au
www.harringtonhomes.com.au

* brochure is for marketing purposes only - subject to change without notice. - colors , furntiture layouts , materials , finishes & landscape design for impression purposes only .- Plans and impressions not to scale