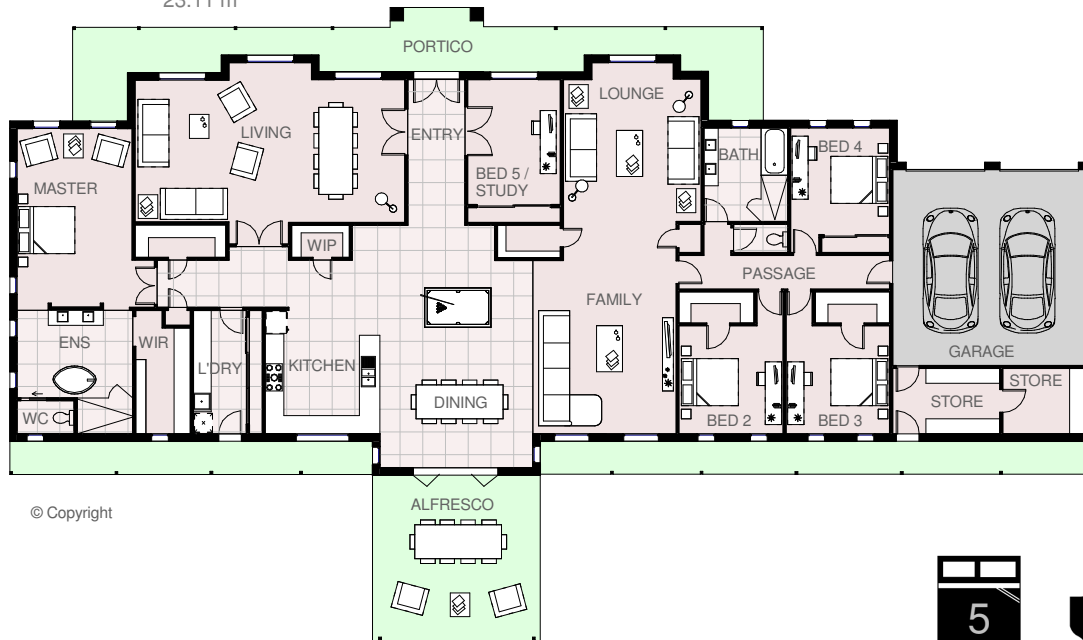




Residence area	440.01 m <sup>2</sup>	47.36 imp sqrs
Garage area	53.32 m <sup>2</sup>	5.74 imp sqrs
Verandah area	75.68 m <sup>2</sup>	8.15 imp sqrs
Portico area	7.13 m <sup>2</sup>	0.77 imp sqrs
Alfresco area	37.17 m <sup>2</sup>	4.00 imp sqrs
Total area	613.31 m <sup>2</sup>	66.02 imp sqrs

Total length 39.30 m  
Total Width 23.11 m

# GRANGE 66



© Copyright



# HARRINGTON H O M E S

VICTORIA

*Love your Lifestyle*

**Display Centre**  
121a Firebrace Street  
Horsham Vic 3400  
Phone: 5382 4400  
Mobile: 0418 504 341

info@harringtonhomes.com.au  
www.harringtonhomes.com.au