



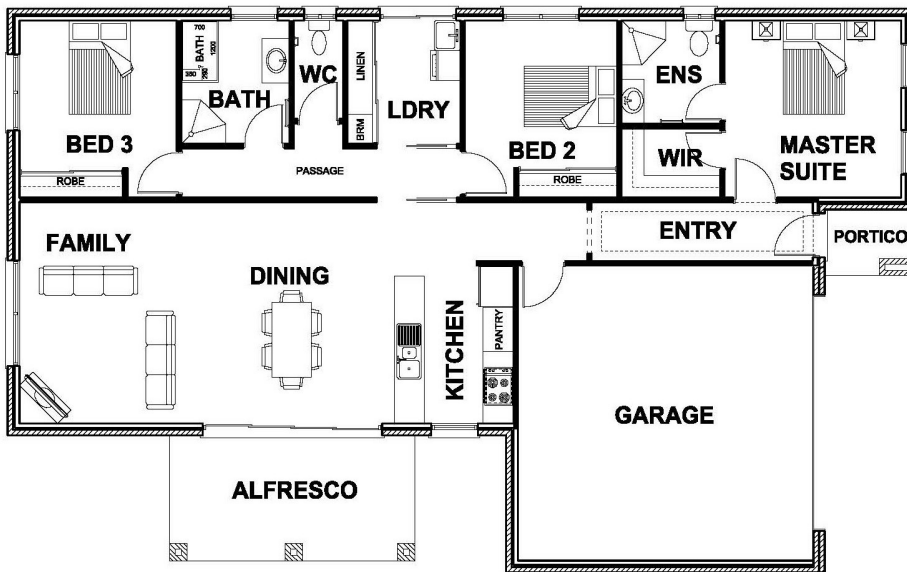
HARRINGTON HOMES

"love your lifestyle"



ALLURE 20

3 2 2 1



ROOM DIMENSIONS

Family	3.75m x 4.50m
Dining	3.60m x 4.50m
Kitchen	2.40m x 3.30m
Master Suite	3.60m x 3.60m
Bedroom 2	3.10m x 3.60m
Bedroom 3	3.20m x 3.60m
Garage	6.01m x 6.00m

HOUSE DIMENSIONS

House Area	13.98 squares
Garage Area	4.35 squares
Alfresco Area	1.37 squares
Total Area	19.96 squares
Total Length	18.42m
Total Width	11.46m
Min Block Width	12.70M*

*Subject to orientation and fall of land and developer and council guidelines. Classic floorplan shown.

Brochure is for marketing purposes only. - Plans and specifications are subject to change without notice. - Colours, furniture layouts, materials, finishes & landscape design are for impression purposes only. - Plans and impressions not to scale. - Plans subject to copyright

www.harringtonhomes.com.au

Harrington Homes Pty Ltd CBD - U 52666

DISPLAY CENTRE

121a Firebrace Street
 Horsham Vic 3400
 Phone: 5382 4400
info@harringtonhomes.com.au