



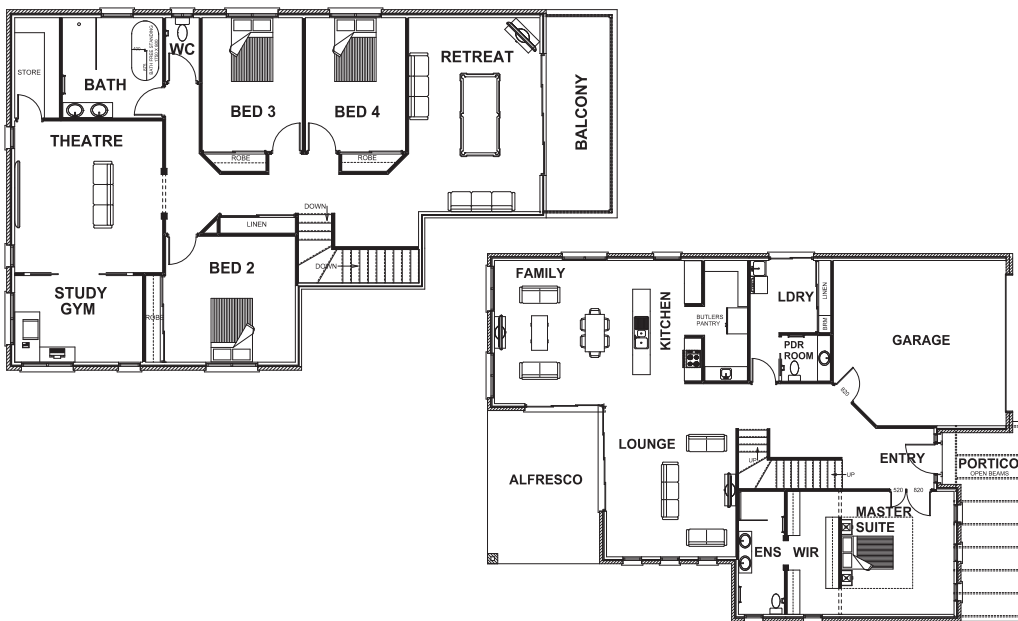
HARRINGTON HOMES

"love your lifestyle"



LAUDERDALE 40

4 Beds 2 Baths 2 Cars 4 Living Areas



ROOM DIMENSIONS

Family	4.82m x 4.98m
Lounge	4.35m x 6.02m
Kitchen	3.99m x 4.20m
Master Suite	3.92m x 4.28m
Bedroom 2	4.48m x 3.77m
Bedroom 3	3.00m x 4.60m
Bedroom 4	3.00m x 4.60m
Garage	6.01m x 5.75m

HOUSE DIMENSIONS

Ground floor	15.42 squares
First floor	15.63 squares
Garage Area	3.74 squares
Alfresco Area	2.24 squares
Portico Area	1.27 squares
Total Area	39.71 squares
Total Length	18.72m
Total Width	12.79m
Min Block Width	13.99m

*Subject to orientation and fall of land and developer and council guidelines. Classic floorplan shown.

Brochure is for marketing purposes only. - Plans and specifications are subject to change without notice. - Colours, furniture layouts, materials, finishes & landscape design are for impression purposes only. - Plans and impressions not to scale. - Plans subject to copyright

www.harringtonhomes.com.au

Harrington Homes Pty Ltd CBD - U 52666

DISPLAY CENTRE

121a Firebrace Street
Horsham Vic 3400
Phone: 5382 4400
info@harringtonhomes.com.au